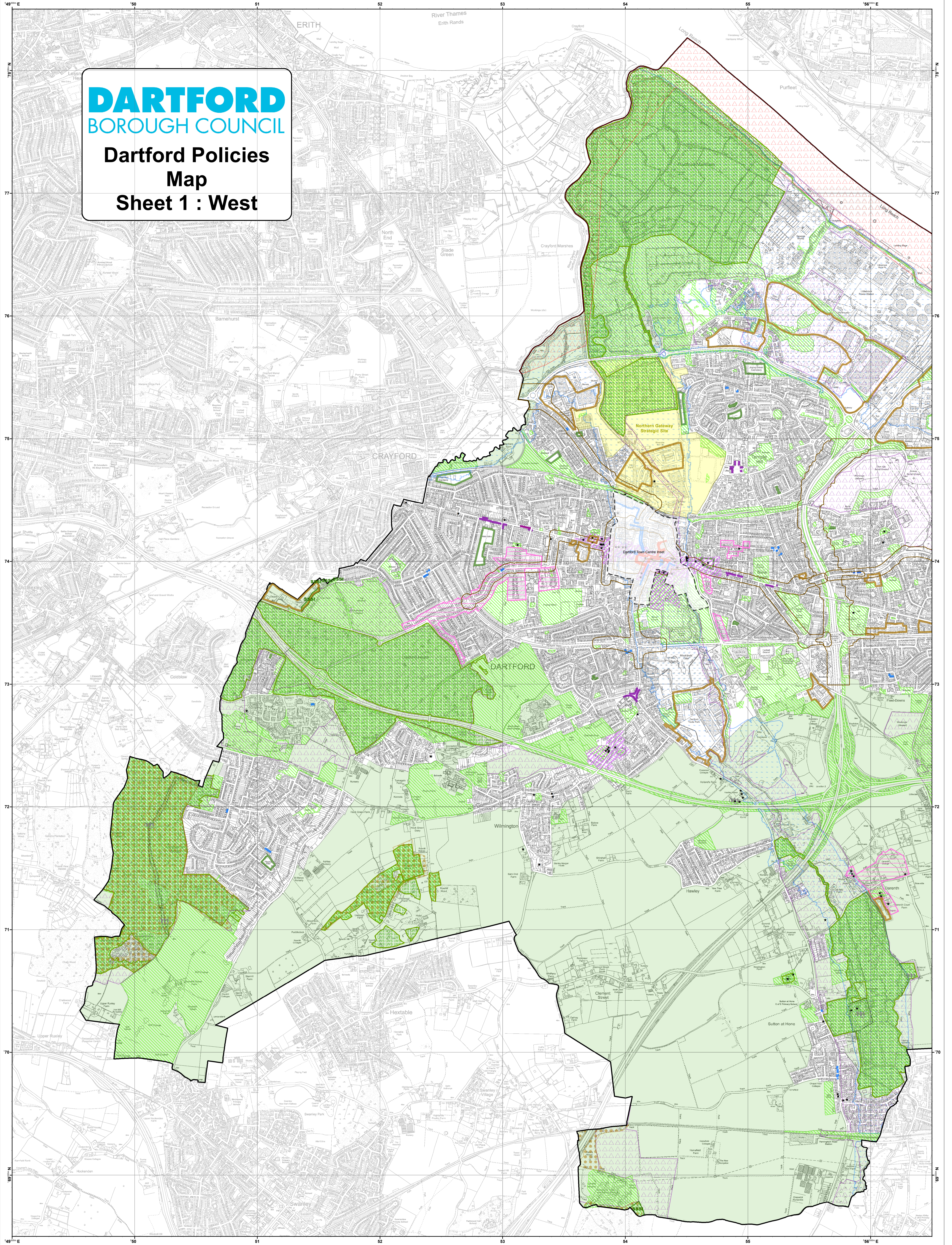


DARTFORD BOROUGH COUNCIL

Dartford Policies Map Sheet 1 : West



□ Plan Boundary

Strategic Development Sites

■ Strategic Sites (CS3, 5)

Conservation & Heritage

• Listed Building (DP12, DP13)

Ⓜ Scheduled Monument (DP12, DP13)

▨ Conservation Area (CS2 (Dartford Town Centre); DP12, DP13)

▨ Area of Special Character (DP12)

Retail & Employment

▭ Dartford Town Centre Boundary (CS2, CS12, CS22; DP14)

▭ Dartford Town Centre Primary Retail Frontage (DP15)

▭ Dartford Town Centre Secondary Retail Frontage (DP16)

▭ Bluewater (CS12; DP14)

▭ District Centre (DP14, DP17, DP19)

▭ Neighbourhood Centre (DP14, DP18, DP19)

▭ Employment Area (CS7; DP20)

Open Space & Environment

▭ Green Belt (CS13; DP22)

▭ Protected Local Green Space (DP23)

▭ Borough Open Space (CS14; DP24)

▭ Sites of Special Scientific Interest (SSSI) (CS14; DP25)

▭ Ancient Woodland (CS14; DP25)

▭ Regionally Important Geological/Geomorphological Sites (CS14; DP25)

▭ Local Wildlife Sites (CS14; DP25)

▭ Biodiversity Opportunity Area (CS14; DP25)

▭ Nature Improvement Area (CS14; DP25)

▭ Flood Risk Area (CS24, DP11)

▭ Air Quality Management Areas (DP5)

The following policies apply to the Local Plan generally:

Strategic & General Policies: CS1, CS4, CS6; DP1, DP2, DP5, DP11

Economy: CS8, CS9

Housing: CS10, CS11; DP6, DP7, DP8, DP9, DP10

Transport: CS15, CS16; DP3, DP4

Communities: CS17, CS18, CS19, CS20, CS21, CS22; DP5, DP21

Sustainability: CS23, CS25

Delivery & Implementation: CS26

Map Scale 1:10,000

Contains Ordnance Survey data © Crown copyright and database rights.

Dartford Borough Council 100025870 2017

Map Produced By The Property Information Team.